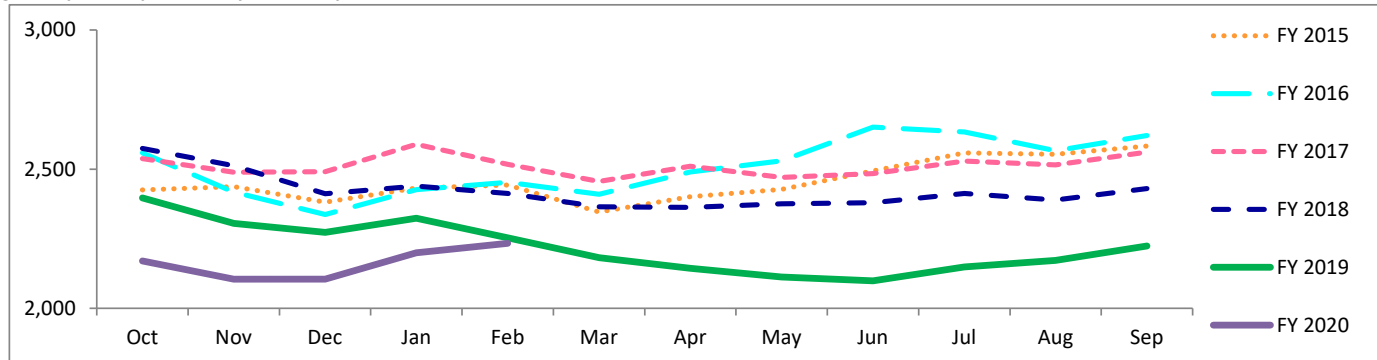


Travis County Jail Dashboard

Average Daily Jail Population by Month by Fiscal Year



Average Daily Population

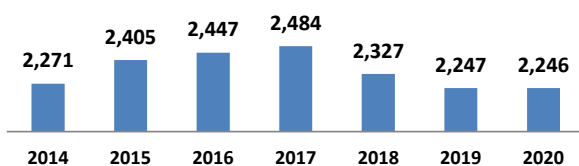
	Oct	Nov	Dec	Jan	Feb	Mar	Apr	May	Jun	Jul	Aug	Sep
FY 2015	2,425	2,437	2,381	2,432	2,443	2,346	2,401	2,427	2,494	2,558	2,553	2,583
FY 2016	2,558	2,418	2,337	2,426	2,453	2,410	2,490	2,530	2,651	2,634	2,566	2,621
FY 2017	2,538	2,489	2,491	2,589	2,517	2,456	2,510	2,470	2,484	2,529	2,516	2,561
FY 2018	2,574	2,512	2,411	2,439	2,413	2,365	2,363	2,376	2,379	2,413	2,389	2,430
FY 2019	2,397	2,305	2,273	2,323	2,254	2,181	2,144	2,112	2,099	2,149	2,172	2,224
FY 2020	2,171	2,105	2,105	2,200	2,233							

*Data Date Range: 01 Oct 2014 - 24 Feb 2020.

Source: Travis County Sheriff Jail Population Report

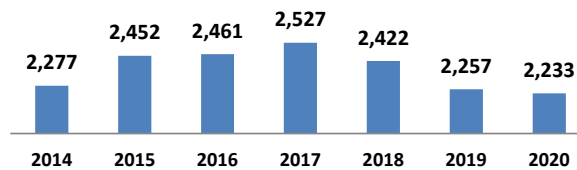
Average Jail Population for Current Day, Month to Date, Prior Month, and Fiscal Year to Date Compared to Prior Years (Axis 2,000-3,000)

Current Day: 24 - Feb



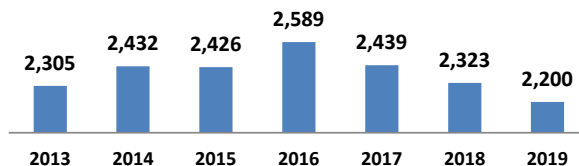
# yearly change	134	42	37	-157	-80	-1
% yearly change	6%	2%	2%	-6%	-3%	0%

Month to Date: 01- 24 Feb



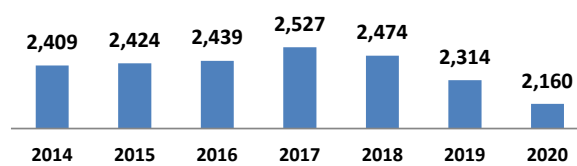
# yearly change	175	9	66	-105	-165	-24
% yearly change	8%	0%	3%	-4%	-7%	-1%

Prior Month: 01- 31 Jan



# yearly change	127	-5	163	-150	-116	-124
% yearly change	6%	0%	7%	-6%	-5%	-5%

Fiscal Year to Date: 01 Oct - 24 Feb



# yearly change	15	15	88	-53	-160	-154
% yearly change	1%	1%	4%	-2%	-6%	-7%

Source: Travis County Sheriff Jail Population Report

Inmates From Hays County in Custody

In accordance with the Interlocal Cooperation Agreement Between Hays County and Travis County For Jail Services, Travis County will house inmates from Hays County through September 30, 2020. Hays County inmates are included in the tables above and are broken out in the table below.

Average Daily Population by Month (Hays County Inmates)

	Oct	Nov	Dec	Jan	Feb	Mar	Apr	May	Jun	Jul	Aug	Sep
FY 2020	33	47	46	48	48							

*Data Date Range: 09 Oct 2019 - 24 Feb 2020.

Source: Travis County Sheriff Jail Population Report