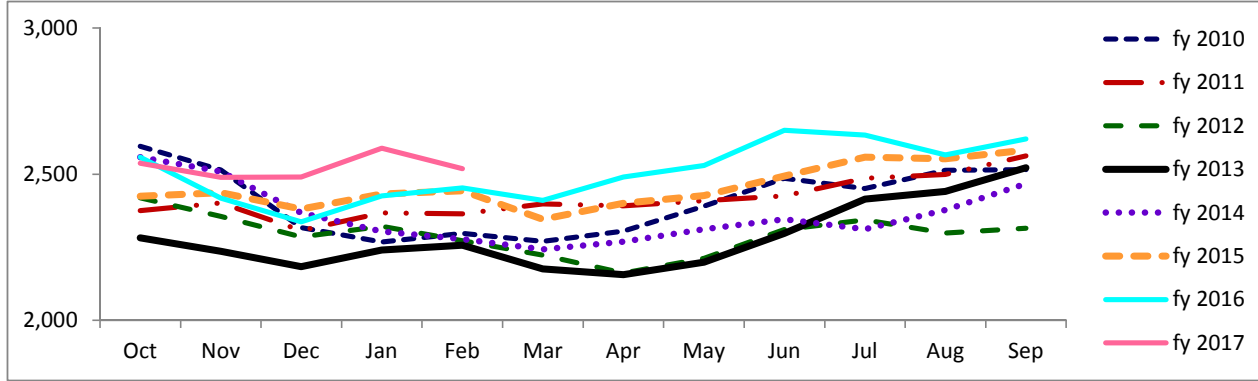


Travis County Jail Dashboard

Average Daily Jail Population by Month by Fiscal Year



Average Daily Population

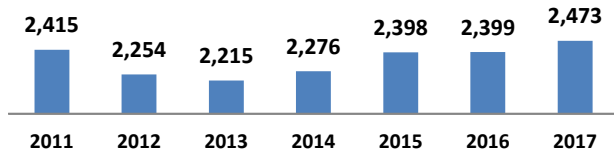
	Oct	Nov	Dec	Jan	Feb	Mar	Apr	May	Jun	Jul	Aug	Sep
fy 2010	2,595	2,515	2,318	2,268	2,298	2,270	2,305	2,391	2,487	2,451	2,514	2,516
fy 2011	2,375	2,401	2,307	2,368	2,364	2,398	2,392	2,409	2,426	2,486	2,499	2,563
fy 2012	2,419	2,356	2,286	2,322	2,272	2,223	2,162	2,213	2,311	2,344	2,299	2,316
fy 2013	2,282	2,236	2,184	2,240	2,257	2,176	2,157	2,199	2,298	2,415	2,442	2,522
fy 2014	2,558	2,510	2,368	2,305	2,278	2,243	2,270	2,312	2,346	2,312	2,377	2,467
fy 2015	2,425	2,437	2,381	2,432	2,443	2,346	2,401	2,427	2,494	2,558	2,553	2,583
fy 2016	2,558	2,418	2,337	2,426	2,453	2,410	2,490	2,530	2,651	2,634	2,566	2,621
fy 2017	2,538	2,489	2,491	2,589	2,519							

*Data Date Range: 1 Oct 2009 - 27 Feb 2017.

Source: Travis County Sheriff Jail Population Report

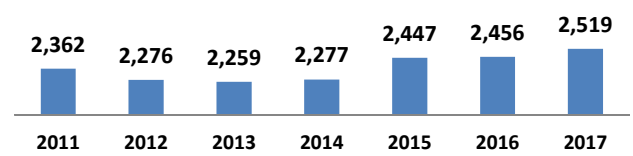
Average Jail Population for Current Day, Month to Date, Prior Month, and Fiscal Year to Date Compared to Prior Years (Axis 2,000-3,000)

Current Day: 27 Feb



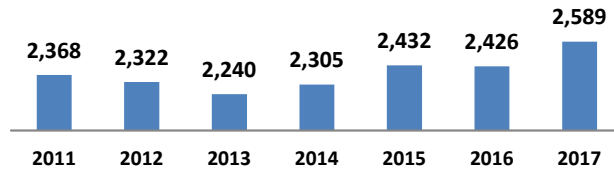
# yearly change	-161	-39	61	122	1	74
% yearly change	-7%	-2%	3%	5%	0%	3%

Month to Date: 01- 27Feb



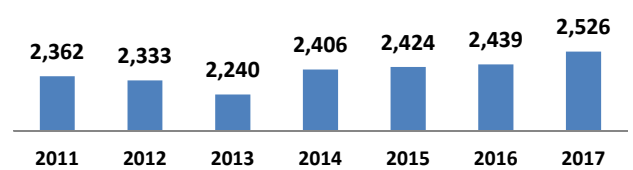
# yearly change	-86	-16	17	170	9	63
% yearly change	-4%	-1%	1%	7%	0%	3%

Prior Month: 01- 31 Jan



# yearly change	-47	-81	64	127	-5	163
% yearly change	-2%	-3%	3%	6%	0%	7%

Fiscal Year to Date: 1 Oct- 27 Feb



# yearly change	-30	-93	166	18	15	87
% yearly change	-1%	-4%	7%	1%	1%	4%

Source: Travis County Sheriff Jail Population Report