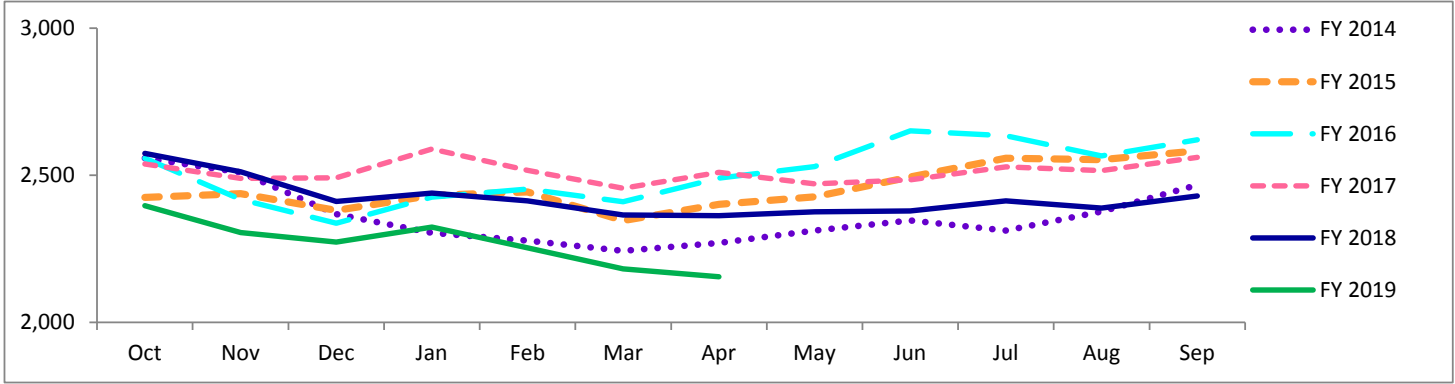


Travis County Jail Dashboard

Average Daily Jail Population by Month by Fiscal Year



Average Daily Population

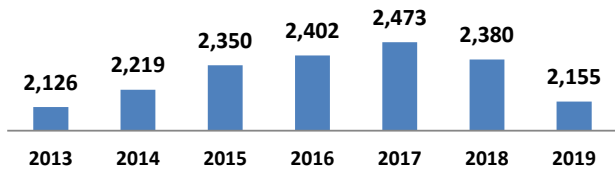
	Oct	Nov	Dec	Jan	Feb	Mar	Apr	May	Jun	Jul	Aug	Sep
FY 2014	2,558	2,510	2,368	2,305	2,278	2,243	2,270	2,312	2,346	2,312	2,377	2,467
FY 2015	2,425	2,437	2,381	2,432	2,443	2,346	2,401	2,427	2,494	2,558	2,553	2,583
FY 2016	2,558	2,418	2,337	2,426	2,453	2,410	2,490	2,530	2,651	2,634	2,566	2,621
FY 2017	2,538	2,489	2,491	2,589	2,517	2,456	2,510	2,470	2,484	2,529	2,516	2,561
FY 2018	2,574	2,512	2,411	2,439	2,413	2,365	2,363	2,376	2,379	2,413	2,389	2,430
FY 2019	2,397	2,305	2,273	2,323	2,254	2,181	2,155					

*Data Date Range: 01 Oct 2013 - 1 Apr 2019.

Source: Travis County Sheriff Jail Population Report

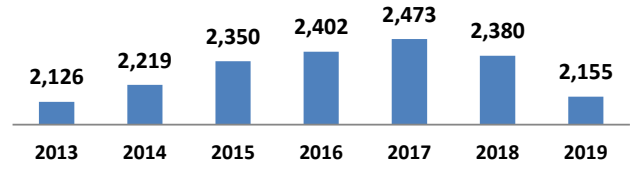
Average Jail Population for Current Day, Month to Date, Prior Month, and Fiscal Year to Date Compared to Prior Years (Axis 2,000-3,000)

Current Day: 01-Apr



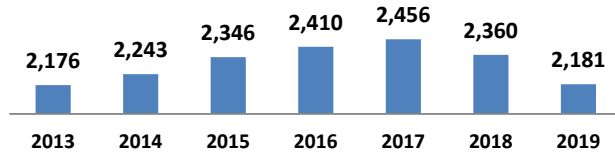
# yearly change	93	131	52	71	-93	-225
% yearly change	4%	6%	2%	3%	-4%	-9%

Month to Date: 01- 01 Apr



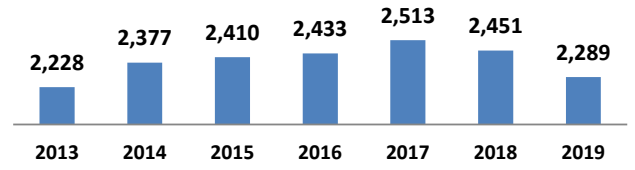
# yearly change	93	131	52	71	-93	-225
% yearly change	4%	6%	2%	3%	-4%	-9%

Prior Month: 01- 31 Mar



# yearly change	67	103	64	46	-95	-179
% yearly change	3%	5%	3%	2%	-4%	-8%

Fiscal Year to Date: 01 Oct - 01 Apr



# yearly change	149	33	24	80	-62	-162
% yearly change	7%	1%	1%	3%	-2%	-7%

Source: Travis County Sheriff Jail Population Report