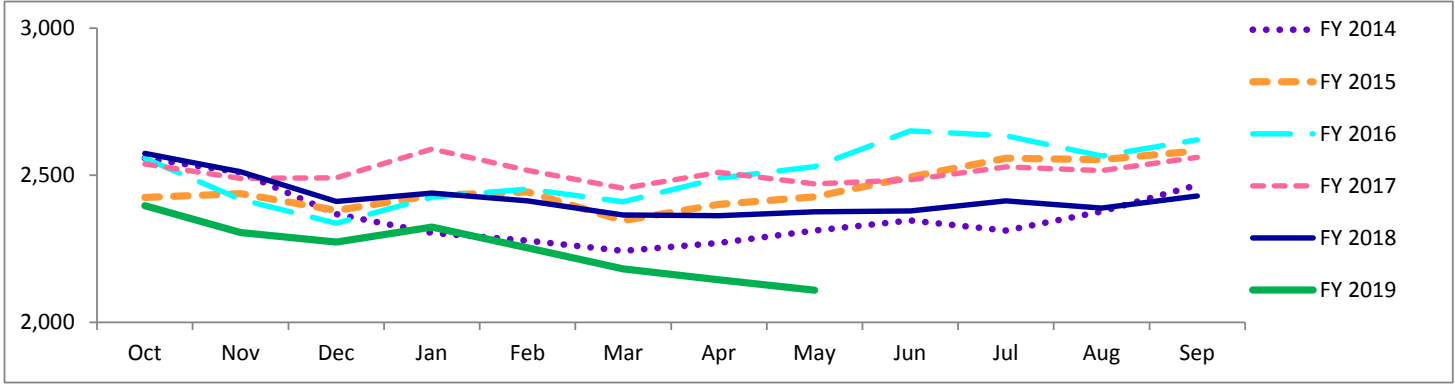


Travis County Jail Dashboard

Average Daily Jail Population by Month by Fiscal Year



Average Daily Population

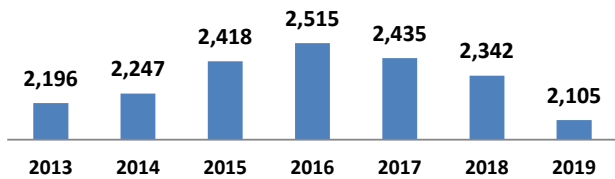
	Oct	Nov	Dec	Jan	Feb	Mar	Apr	May	Jun	Jul	Aug	Sep
FY 2014	2,558	2,510	2,368	2,305	2,278	2,243	2,270	2,312	2,346	2,312	2,377	2,467
FY 2015	2,425	2,437	2,381	2,432	2,443	2,346	2,401	2,427	2,494	2,558	2,553	2,583
FY 2016	2,558	2,418	2,337	2,426	2,453	2,410	2,490	2,530	2,651	2,634	2,566	2,621
FY 2017	2,538	2,489	2,491	2,589	2,517	2,456	2,510	2,470	2,484	2,529	2,516	2,561
FY 2018	2,574	2,512	2,411	2,439	2,413	2,365	2,363	2,376	2,379	2,413	2,389	2,430
FY 2019	2,397	2,305	2,273	2,323	2,254	2,181	2,144	2,109				

*Data Date Range: 01 Oct 2013 - 20 May 2019.

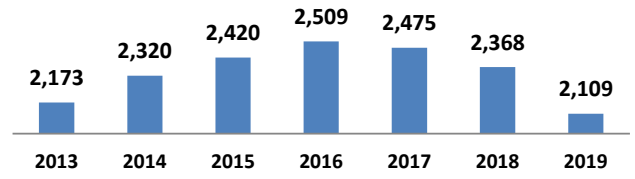
Source: Travis County Sheriff Jail Population Report

Average Jail Population for Current Day, Month to Date, Prior Month, and Fiscal Year to Date Compared to Prior Years (Axis 2,000-3,000)

Current Day: 20-May



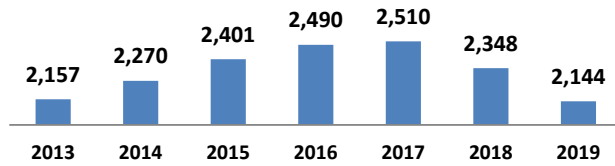
Month to Date: 01- 20 May



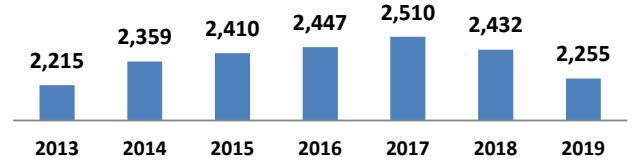
# yearly change	51	171	97	-80	-93	-237
% yearly change	2%	8%	4%	-3%	-4%	-10%

# yearly change	147	100	89	-35	-107	-259
% yearly change	7%	4%	4%	-1%	-4%	-11%

Prior Month: 01- 30 Apr



Fiscal Year to Date: 01 Oct - 20 May



# yearly change	113	132	88	20	-163	-203
% yearly change	5%	6%	4%	1%	-6%	-9%

# yearly change	144	51	38	62	-78	-176
% yearly change	7%	2%	2%	3%	-3%	-7%

Source: Travis County Sheriff Jail Population Report