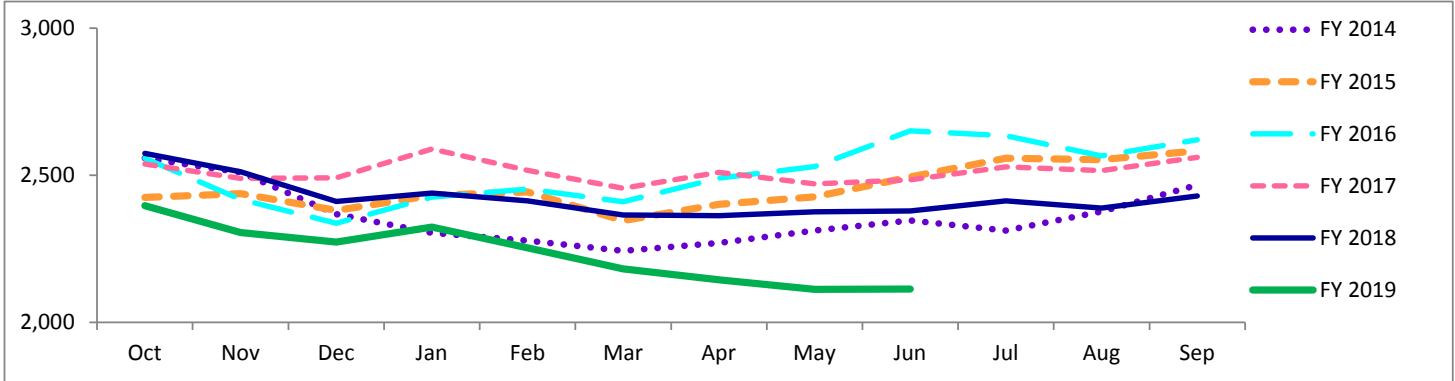


Travis County Jail Dashboard

Average Daily Jail Population by Month by Fiscal Year



Average Daily Population

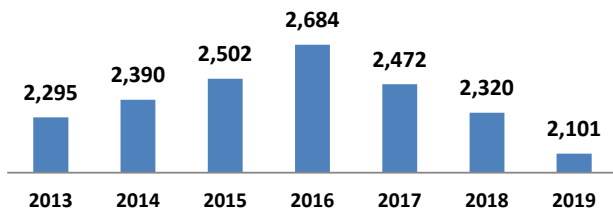
	Oct	Nov	Dec	Jan	Feb	Mar	Apr	May	Jun	Jul	Aug	Sep
FY 2014	2,558	2,510	2,368	2,305	2,278	2,243	2,270	2,312	2,346	2,312	2,377	2,467
FY 2015	2,425	2,437	2,381	2,432	2,443	2,346	2,401	2,427	2,494	2,558	2,553	2,583
FY 2016	2,558	2,418	2,337	2,426	2,453	2,410	2,490	2,530	2,651	2,634	2,566	2,621
FY 2017	2,538	2,489	2,491	2,589	2,517	2,456	2,510	2,470	2,484	2,529	2,516	2,561
FY 2018	2,574	2,512	2,411	2,439	2,413	2,365	2,363	2,376	2,379	2,413	2,389	2,430
FY 2019	2,397	2,305	2,273	2,323	2,254	2,181	2,144	2,112	2,114			

*Data Date Range: 01 Oct 2013 - 10 Jun 2019.

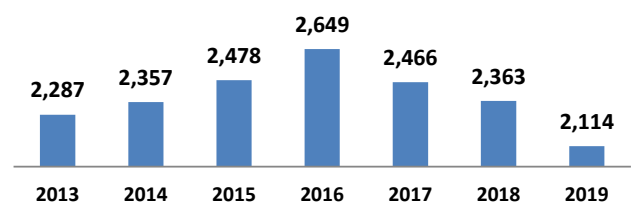
Source: Travis County Sheriff Jail Population Report

Average Jail Population for Current Day, Month to Date, Prior Month, and Fiscal Year to Date Compared to Prior Years (Axis 2,000-3,000)

Current Day: 10-Jun



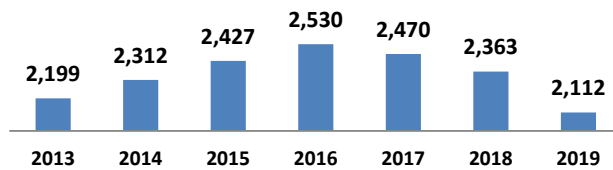
Month to Date: 01- 10 Jun



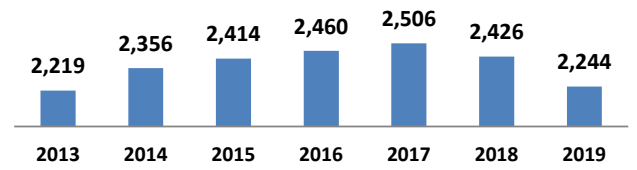
	2013	2014	2015	2016	2017	2018	2019
# yearly change		95	112	182	-212	-152	-219
% yearly change		4%	5%	7%	-8%	-6%	-9%

	2013	2014	2015	2016	2017	2018	2019
# yearly change		70	121	171	-183	-103	-249
% yearly change		3%	5%	7%	-7%	-4%	-11%

Prior Month: 01- 31 May



Fiscal Year to Date: 01 Oct - 10 Jun



	2013	2014	2015	2016	2017	2018	2019
# yearly change		113	116	102	-59	-108	-250
% yearly change		5%	5%	4%	-2%	-4%	-11%

	2013	2014	2015	2016	2017	2018	2019
# yearly change		137	58	47	45	-80	-182
% yearly change		6%	2%	2%	2%	-3%	-7%

Source: Travis County Sheriff Jail Population Report