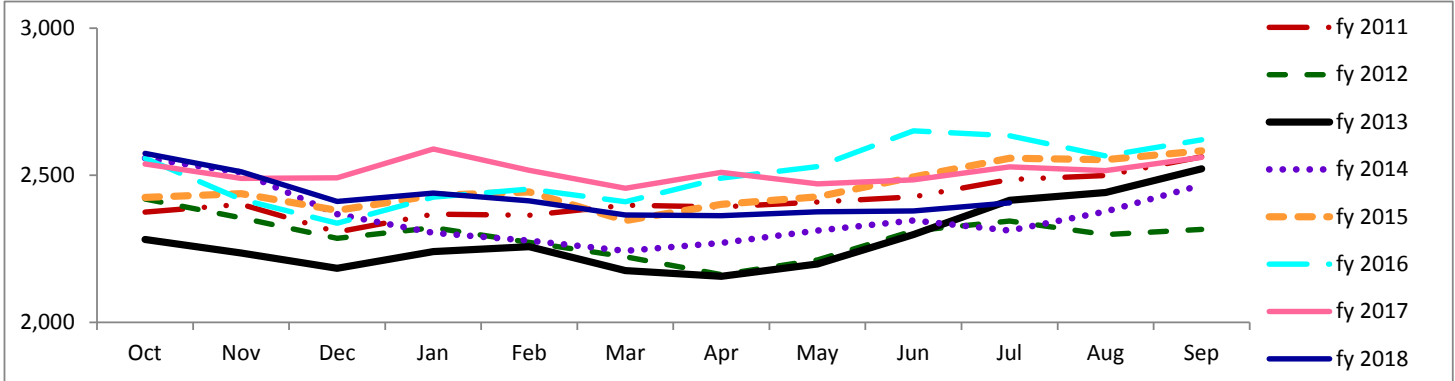


# Travis County Jail Dashboard

## Average Daily Jail Population by Month by Fiscal Year



### Average Daily Population

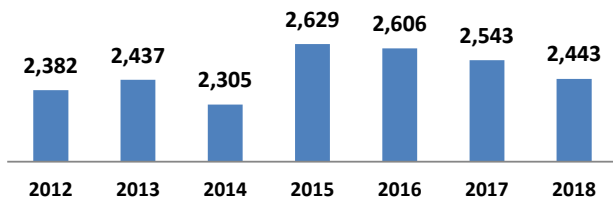
	Oct	Nov	Dec	Jan	Feb	Mar	Apr	May	Jun	Jul	Aug	Sep
fy 2011	2,375	2,401	2,307	2,368	2,364	2,398	2,392	2,409	2,426	2,486	2,499	2,563
fy 2012	2,419	2,356	2,286	2,322	2,272	2,223	2,162	2,213	2,311	2,344	2,299	2,316
fy 2013	2,282	2,236	2,184	2,240	2,257	2,176	2,157	2,199	2,298	2,415	2,442	2,522
fy 2014	2,558	2,510	2,368	2,305	2,278	2,243	2,270	2,312	2,346	2,312	2,377	2,467
fy 2015	2,425	2,437	2,381	2,432	2,443	2,346	2,401	2,427	2,494	2,558	2,553	2,583
fy 2016	2,558	2,418	2,337	2,426	2,453	2,410	2,490	2,530	2,651	2,634	2,566	2,621
fy 2017	2,538	2,489	2,491	2,589	2,517	2,456	2,510	2,470	2,484	2,529	2,516	2,561
fy 2018	2,574	2,512	2,411	2,439	2,413	2,365	2,363	2,376	2,379	2,406		

\*Data Date Range: 1 Oct 2010 - 23 Jul 2018.

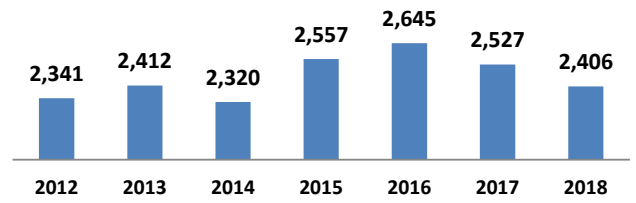
Source: Travis County Sheriff Jail Population Report

### Average Jail Population for Current Day, Month to Date, Prior Month, and Fiscal Year to Date Compared to Prior Years (Axis 2,000-3,000)

#### Current Day: 23-Jul



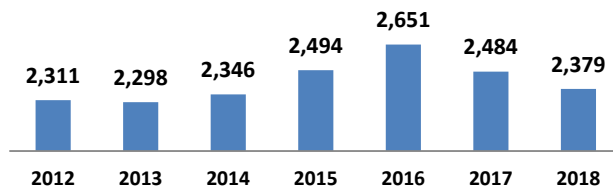
#### Month to Date: 01- 23 Jul



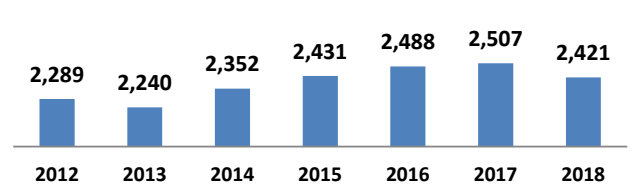
	2012	2013	2014	2015	2016	2017	2018
# yearly change		55	-132	324	-23	-63	-100
% yearly change		2%	-5%	14%	-1%	-2%	-4%

	2012	2013	2014	2015	2016	2017	2018
# yearly change		71	-91	237	88	-118	-121
% yearly change		3%	-4%	10%	3%	-4%	-5%

#### Prior Month: 01- 30 Jun



#### Fiscal Year to Date: 01 Oct - 23 Jul



	2012	2013	2014	2015	2016	2017	2018
# yearly change		-13	48	148	157	-167	-105
% yearly change		-1%	2%	6%	6%	-6%	-4%

	2012	2013	2014	2015	2016	2017	2018
# yearly change		-50	113	79	57	19	-85
% yearly change		-2%	5%	3%	2%	1%	-3%

Source: Travis County Sheriff Jail Population Report