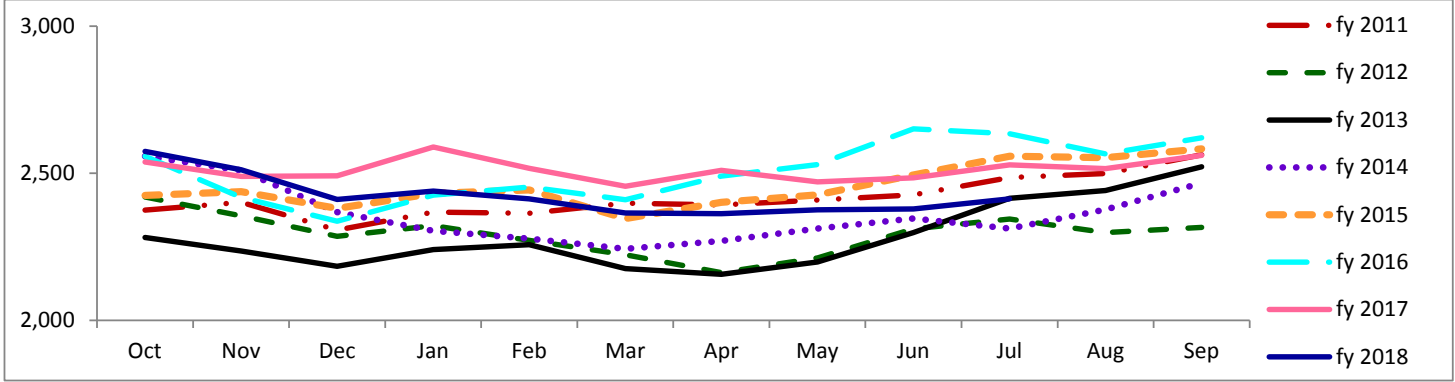


Travis County Jail Dashboard

Average Daily Jail Population by Month by Fiscal Year



Average Daily Population

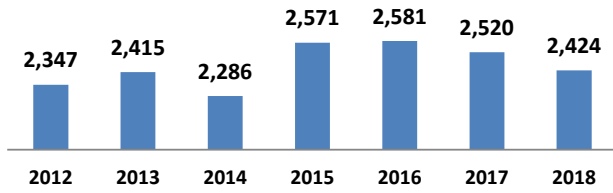
	Oct	Nov	Dec	Jan	Feb	Mar	Apr	May	Jun	Jul	Aug	Sep
fy 2011	2,375	2,401	2,307	2,368	2,364	2,398	2,392	2,409	2,426	2,486	2,499	2,563
fy 2012	2,419	2,356	2,286	2,322	2,272	2,223	2,162	2,213	2,311	2,344	2,299	2,316
fy 2013	2,282	2,236	2,184	2,240	2,257	2,176	2,157	2,199	2,298	2,415	2,442	2,522
fy 2014	2,558	2,510	2,368	2,305	2,278	2,243	2,270	2,312	2,346	2,312	2,377	2,467
fy 2015	2,425	2,437	2,381	2,432	2,443	2,346	2,401	2,427	2,494	2,558	2,553	2,583
fy 2016	2,558	2,418	2,337	2,426	2,453	2,410	2,490	2,530	2,651	2,634	2,566	2,621
fy 2017	2,538	2,489	2,491	2,589	2,517	2,456	2,510	2,470	2,484	2,529	2,516	2,561
fy 2018	2,574	2,512	2,411	2,439	2,413	2,365	2,363	2,376	2,379	2,413		

*Data Date Range: 1 Oct 2010 - 30 Jul 2018.

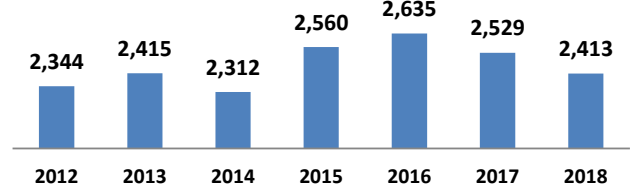
Source: Travis County Sheriff Jail Population Report

Average Jail Population for Current Day, Month to Date, Prior Month, and Fiscal Year to Date Compared to Prior Years (Axis 2,000-3,000)

Current Day: 30-Jul



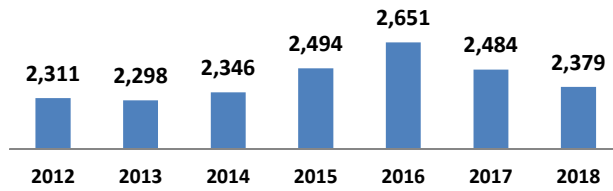
Month to Date: 01- 30 Jul



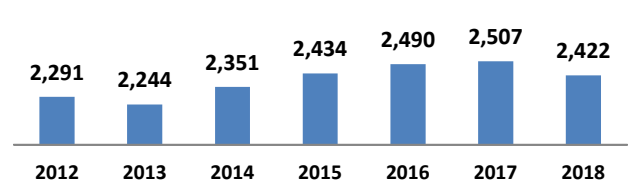
	2012	2013	2014	2015	2016	2017	2018
# yearly change		68	-129	285	10	-61	-96
% yearly change		3%	-5%	12%	0%	-2%	-4%

	2012	2013	2014	2015	2016	2017	2018
# yearly change		71	-103	247	75	-106	-115
% yearly change		3%	-4%	11%	3%	-4%	-5%

Prior Month: 01- 30 Jun



Fiscal Year to Date: 01 Oct - 30 Jul



	2012	2013	2014	2015	2016	2017	2018
# yearly change		-13	48	148	157	-167	-105
% yearly change		-1%	2%	6%	6%	-6%	-4%

	2012	2013	2014	2015	2016	2017	2018
# yearly change		-47	107	83	56	17	-85
% yearly change		-2%	5%	4%	2%	1%	-3%

Source: Travis County Sheriff Jail Population Report