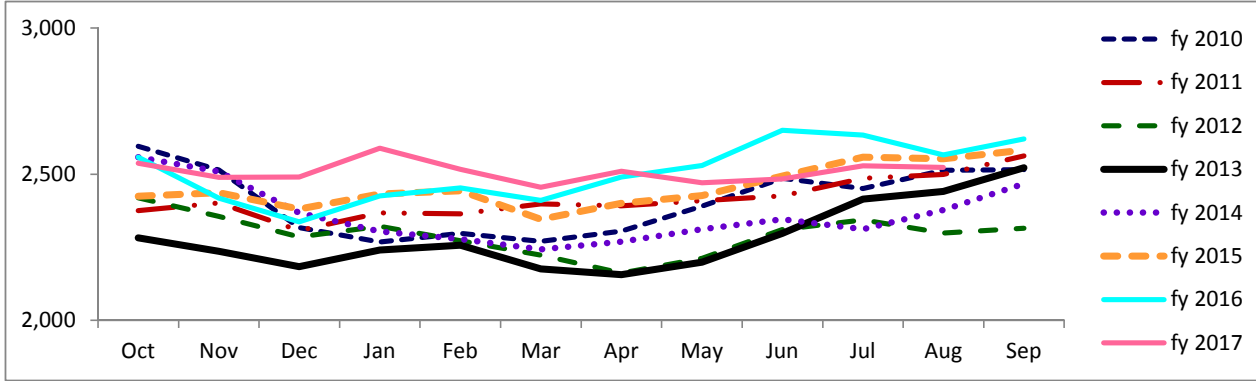


Travis County Jail Dashboard

Average Daily Jail Population by Month by Fiscal Year



Average Daily Population

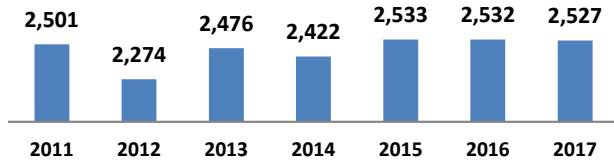
	Oct	Nov	Dec	Jan	Feb	Mar	Apr	May	Jun	Jul	Aug	Sep
fy 2010	2,595	2,515	2,318	2,268	2,298	2,270	2,305	2,391	2,487	2,451	2,514	2,516
fy 2011	2,375	2,401	2,307	2,368	2,364	2,398	2,392	2,409	2,426	2,486	2,499	2,563
fy 2012	2,419	2,356	2,286	2,322	2,272	2,223	2,162	2,213	2,311	2,344	2,299	2,316
fy 2013	2,282	2,236	2,184	2,240	2,257	2,176	2,157	2,199	2,298	2,415	2,442	2,522
fy 2014	2,558	2,510	2,368	2,305	2,278	2,243	2,270	2,312	2,346	2,312	2,377	2,467
fy 2015	2,425	2,437	2,381	2,432	2,443	2,346	2,401	2,427	2,494	2,558	2,553	2,583
fy 2016	2,558	2,418	2,337	2,426	2,453	2,410	2,490	2,530	2,651	2,634	2,566	2,621
fy 2017	2,538	2,489	2,491	2,589	2,517	2,456	2,510	2,470	2,484	2,529	2,523	

*Data Date Range: 1 Oct 2009 - 21 August 2017.

Source: Travis County Sheriff Jail Population Report

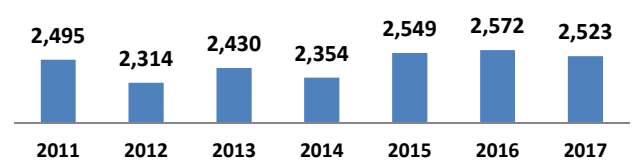
Average Jail Population for Current Day, Month to Date, Prior Month, and Fiscal Year to Date Compared to Prior Years (Axis 2,000-3,000)

Current Day: 21 Aug



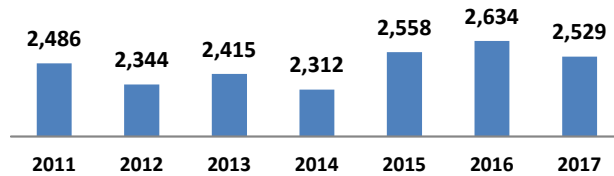
	2011	2012	2013	2014	2015	2016	2017
# yearly change		-227	202	-54	111	-1	-5
% yearly change		-9%	9%	-2%	5%	0%	0%

Month to Date: 01- 21 Aug



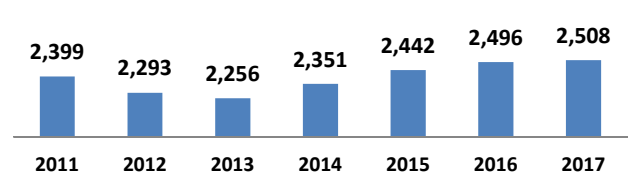
	2011	2012	2013	2014	2015	2016	2017
# yearly change		-181	116	-75	195	23	-48
% yearly change		-7%	5%	-3%	8%	1%	-2%

Prior Month: 01- 31 July



	2011	2012	2013	2014	2015	2016	2017
# yearly change		-142	71	-104	246	76	-105
% yearly change		-6%	3%	-4%	11%	3%	-4%

Fiscal Year to Date: 1 Oct- 21 Aug



	2011	2012	2013	2014	2015	2016	2017
# yearly change		-107	-36	94	91	54	13
% yearly change		-4%	-2%	4%	4%	2%	1%

Source: Travis County Sheriff Jail Population Report