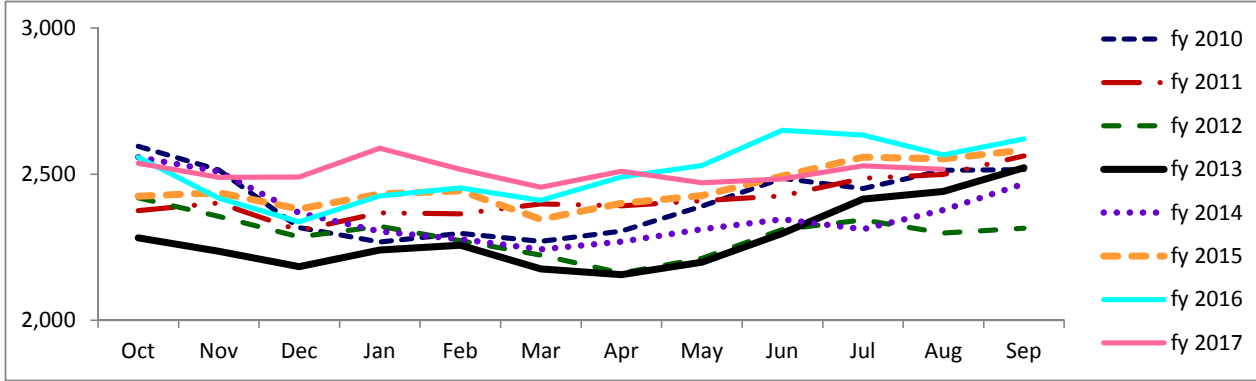


Travis County Jail Dashboard

Average Daily Jail Population by Month by Fiscal Year



Average Daily Population

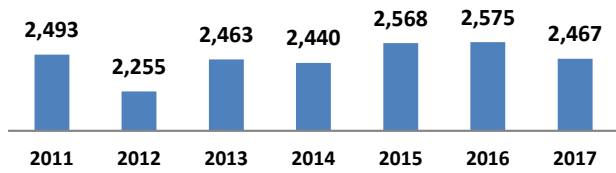
| | Oct | Nov | Dec | Jan | Feb | Mar | Apr | May | Jun | Jul | Aug | Sep |
|---------|-------|-------|-------|-------|-------|-------|-------|-------|-------|-------|-------|-------|
| fy 2010 | 2,595 | 2,515 | 2,318 | 2,268 | 2,298 | 2,270 | 2,305 | 2,391 | 2,487 | 2,451 | 2,514 | 2,516 |
| fy 2011 | 2,375 | 2,401 | 2,307 | 2,368 | 2,364 | 2,398 | 2,392 | 2,409 | 2,426 | 2,486 | 2,499 | 2,563 |
| fy 2012 | 2,419 | 2,356 | 2,286 | 2,322 | 2,272 | 2,223 | 2,162 | 2,213 | 2,311 | 2,344 | 2,299 | 2,316 |
| fy 2013 | 2,282 | 2,236 | 2,184 | 2,240 | 2,257 | 2,176 | 2,157 | 2,199 | 2,298 | 2,415 | 2,442 | 2,522 |
| fy 2014 | 2,558 | 2,510 | 2,368 | 2,305 | 2,278 | 2,243 | 2,270 | 2,312 | 2,346 | 2,312 | 2,377 | 2,467 |
| fy 2015 | 2,425 | 2,437 | 2,381 | 2,432 | 2,443 | 2,346 | 2,401 | 2,427 | 2,494 | 2,558 | 2,553 | 2,583 |
| fy 2016 | 2,558 | 2,418 | 2,337 | 2,426 | 2,453 | 2,410 | 2,490 | 2,530 | 2,651 | 2,634 | 2,566 | 2,621 |
| fy 2017 | 2,538 | 2,489 | 2,491 | 2,589 | 2,517 | 2,456 | 2,510 | 2,470 | 2,484 | 2,529 | 2,517 | |

*Data Date Range: 1 Oct 2009 - 28 August 2017.

Source: Travis County Sheriff Jail Population Report

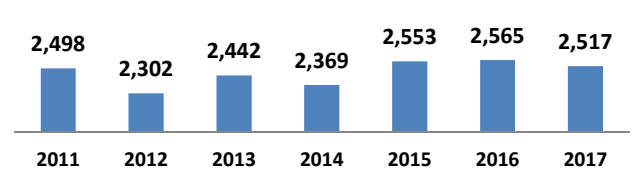
Average Jail Population for Current Day, Month to Date, Prior Month, and Fiscal Year to Date Compared to Prior Years (Axis 2,000-3,000)

Current Day: 28 Aug



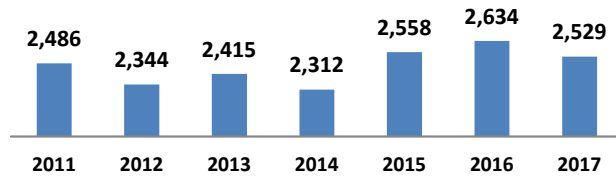
| | 2011 | 2012 | 2013 | 2014 | 2015 | 2016 | 2017 |
|-----------------|------|------|------|------|------|------|------|
| # yearly change | | -238 | 208 | -23 | 128 | 7 | -108 |
| % yearly change | | -10% | 9% | -1% | 5% | 0% | -4% |

Month to Date: 01- 28 Aug



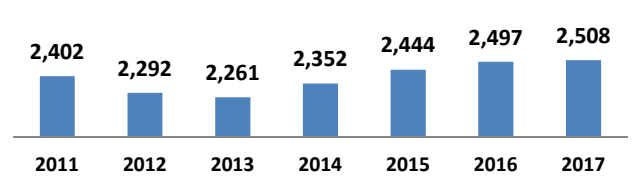
| | 2011 | 2012 | 2013 | 2014 | 2015 | 2016 | 2017 |
|-----------------|------|------|------|------|------|------|------|
| # yearly change | | -196 | 140 | -73 | 184 | 12 | -48 |
| % yearly change | | -8% | 6% | -3% | 8% | 0% | -2% |

Prior Month: 01- 31 July



| | 2011 | 2012 | 2013 | 2014 | 2015 | 2016 | 2017 |
|-----------------|------|------|------|------|------|------|------|
| # yearly change | | -142 | 71 | -104 | 246 | 76 | -105 |
| % yearly change | | -6% | 3% | -4% | 11% | 3% | -4% |

Fiscal Year to Date: 1 Oct- 28 Aug



| | 2011 | 2012 | 2013 | 2014 | 2015 | 2016 | 2017 |
|-----------------|------|------|------|------|------|------|------|
| # yearly change | | -110 | -31 | 91 | 92 | 53 | 11 |
| % yearly change | | -5% | -1% | 4% | 4% | 2% | 0% |

Source: Travis County Sheriff Jail Population Report