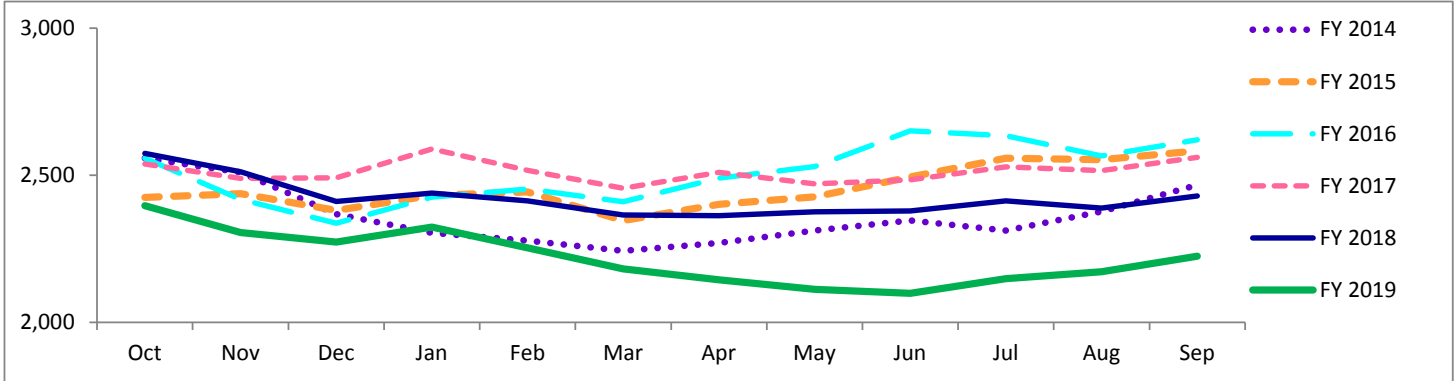


Travis County Jail Dashboard

Average Daily Jail Population by Month by Fiscal Year



Average Daily Population

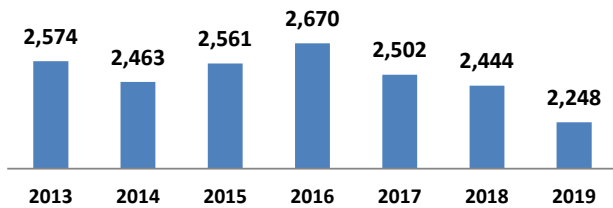
	Oct	Nov	Dec	Jan	Feb	Mar	Apr	May	Jun	Jul	Aug	Sep
FY 2014	2,558	2,510	2,368	2,305	2,278	2,243	2,270	2,312	2,346	2,312	2,377	2,467
FY 2015	2,425	2,437	2,381	2,432	2,443	2,346	2,401	2,427	2,494	2,558	2,553	2,583
FY 2016	2,558	2,418	2,337	2,426	2,453	2,410	2,490	2,530	2,651	2,634	2,566	2,621
FY 2017	2,538	2,489	2,491	2,589	2,517	2,456	2,510	2,470	2,484	2,529	2,516	2,561
FY 2018	2,574	2,512	2,411	2,439	2,413	2,365	2,363	2,376	2,379	2,413	2,389	2,430
FY 2019	2,397	2,305	2,273	2,323	2,254	2,181	2,144	2,112	2,099	2,149	2,172	2,225

*Data Date Range: 01 Oct 2013 - 16 Sep 2019.

Source: Travis County Sheriff Jail Population Report

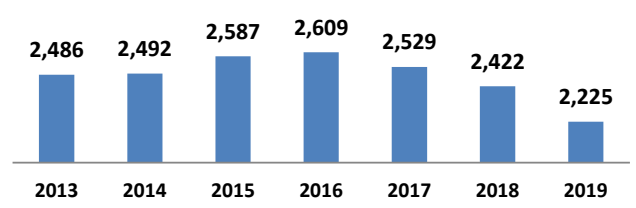
Average Jail Population for Current Day, Month to Date, Prior Month, and Fiscal Year to Date Compared to Prior Years (Axis 2,000-3,000)

Current Day: 16- Sep



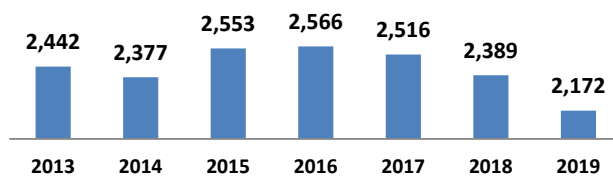
# yearly change	-111	98	109	-168	-58	-196
% yearly change	-4%	4%	4%	-6%	-2%	-8%

Month to Date: 01- 16 Sep



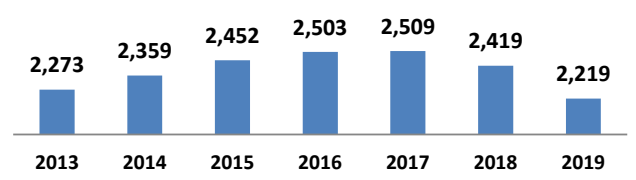
# yearly change	7	95	22	-81	-107	-196
% yearly change	0%	4%	1%	-3%	-4%	-8%

Prior Month: 01- 31 Aug



# yearly change	-64	176	12	-50	-127	-217
% yearly change	-3%	7%	0%	-2%	-5%	-9%

Fiscal Year to Date: 01 Oct - 16 Sep



# yearly change	87	92	51	6	-90	-199
% yearly change	4%	4%	2%	0%	-4%	-8%

Source: Travis County Sheriff Jail Population Report