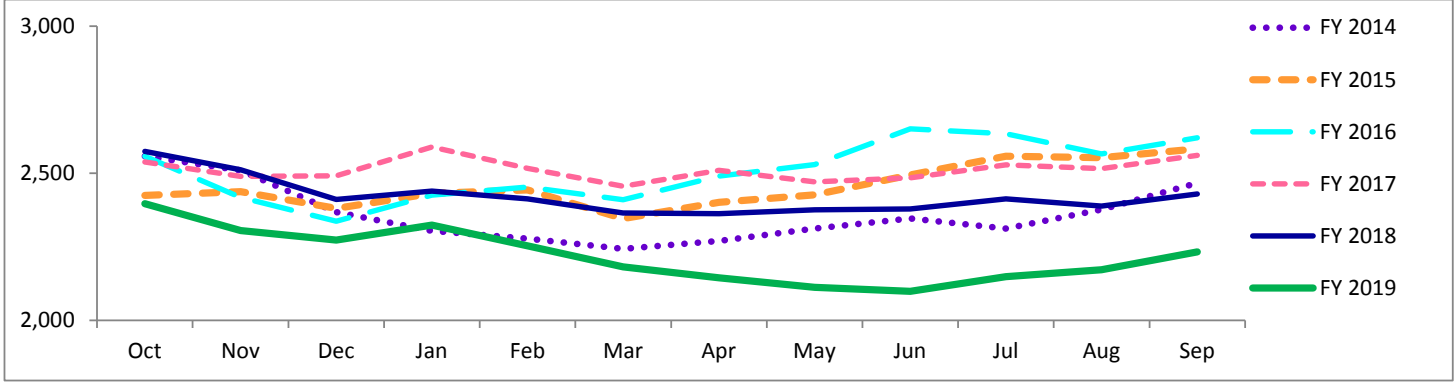


# Travis County Jail Dashboard

## Average Daily Jail Population by Month by Fiscal Year



### Average Daily Population

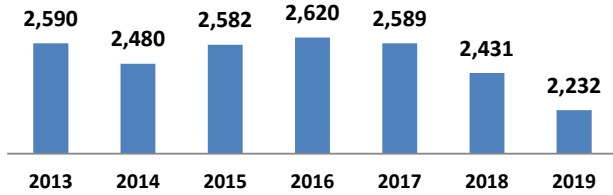
	Oct	Nov	Dec	Jan	Feb	Mar	Apr	May	Jun	Jul	Aug	Sep
<b>FY 2014</b>	2,558	2,510	2,368	2,305	2,278	2,243	2,270	2,312	2,346	2,312	2,377	2,467
<b>FY 2015</b>	2,425	2,437	2,381	2,432	2,443	2,346	2,401	2,427	2,494	2,558	2,553	2,583
<b>FY 2016</b>	2,558	2,418	2,337	2,426	2,453	2,410	2,490	2,530	2,651	2,634	2,566	2,621
<b>FY 2017</b>	2,538	2,489	2,491	2,589	2,517	2,456	2,510	2,470	2,484	2,529	2,516	2,561
<b>FY 2018</b>	2,574	2,512	2,411	2,439	2,413	2,365	2,363	2,376	2,379	2,413	2,389	2,430
<b>FY 2019</b>	2,397	2,305	2,273	2,323	2,254	2,181	2,144	2,112	2,099	2,149	2,172	2,233

\*Data Date Range: 01 Oct 2013 - 23 Sep 2019.

Source: Travis County Sheriff Jail Population Report

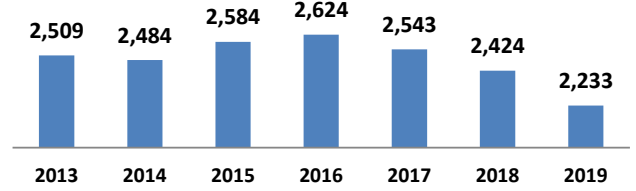
### Average Jail Population for Current Day, Month to Date, Prior Month, and Fiscal Year to Date Compared to Prior Years (Axis 2,000-3,000)

#### Current Day: 23- Sep



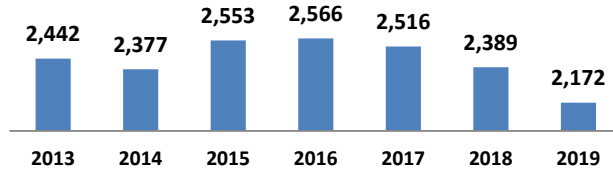
# yearly change	-110	102	38	-31	-158	-199
% yearly change	-4%	4%	1%	-1%	-6%	-8%

#### Month to Date: 01- 23 Sep



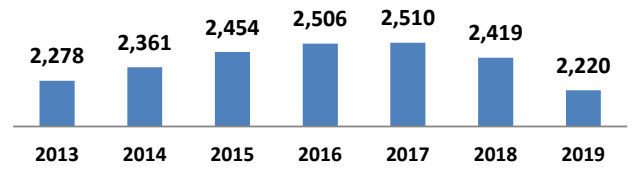
# yearly change	-25	101	40	-81	-118	-191
% yearly change	-1%	4%	2%	-3%	-5%	-8%

#### Prior Month: 01- 31 Aug



# yearly change	-64	176	12	-50	-127	-217
% yearly change	-3%	7%	0%	-2%	-5%	-9%

#### Fiscal Year to Date: 01 Oct - 23 Sep



# yearly change	83	93	51	5	-91	-199
% yearly change	4%	4%	2%	0%	-4%	-8%

Source: Travis County Sheriff Jail Population Report