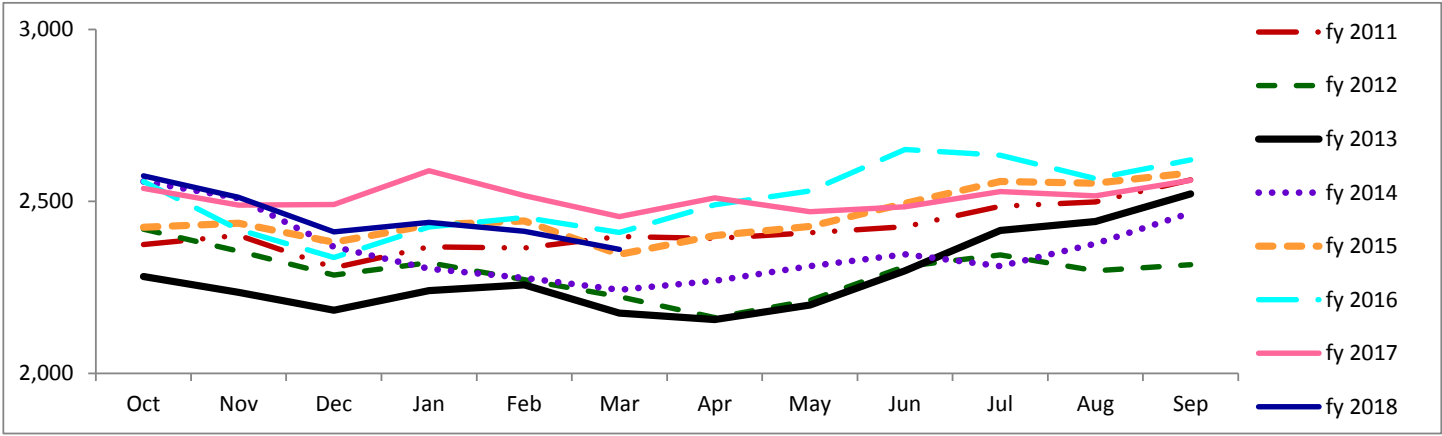


Travis County Jail Dashboard

Average Daily Jail Population by Month by Fiscal Year



Average Daily Population

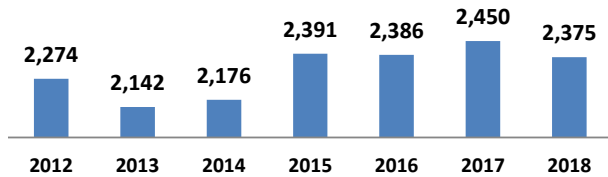
	Oct	Nov	Dec	Jan	Feb	Mar	Apr	May	Jun	Jul	Aug	Sep
fy 2011	2,375	2,401	2,307	2,368	2,364	2,398	2,392	2,409	2,426	2,486	2,499	2,563
fy 2012	2,419	2,356	2,286	2,322	2,272	2,223	2,162	2,213	2,311	2,344	2,299	2,316
fy 2013	2,282	2,236	2,184	2,240	2,257	2,176	2,157	2,199	2,298	2,415	2,442	2,522
fy 2014	2,558	2,510	2,368	2,305	2,278	2,243	2,270	2,312	2,346	2,312	2,377	2,467
fy 2015	2,425	2,437	2,381	2,432	2,443	2,346	2,401	2,427	2,494	2,558	2,553	2,583
fy 2016	2,558	2,418	2,337	2,426	2,453	2,410	2,490	2,530	2,651	2,634	2,566	2,621
fy 2017	2,538	2,489	2,491	2,589	2,517	2,456	2,510	2,470	2,484	2,529	2,516	2,561
fy 2018	2,574	2,512	2,411	2,439	2,413	2,361						

*Data Date Range: 1 Oct 2010 - 19 Mar 2018.

Source: Travis County Sheriff Jail Population Report

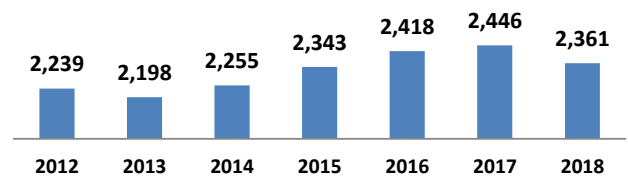
Average Jail Population for Current Day, Month to Date, Prior Month, and Fiscal Year to Date Compared to Prior Years (Axis 2,000-3,000)

Current Day: 19 Mar



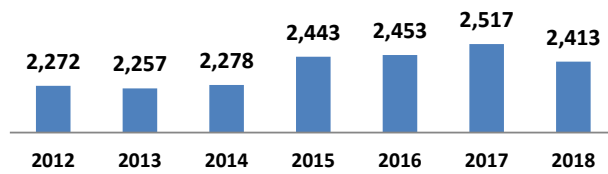
	2012	2013	2014	2015	2016	2017	2018
# yearly change		-132	34	215	-5	64	-75
% yearly change		-6%	2%	10%	0%	3%	-3%

Month to Date: 01- 19 Mar



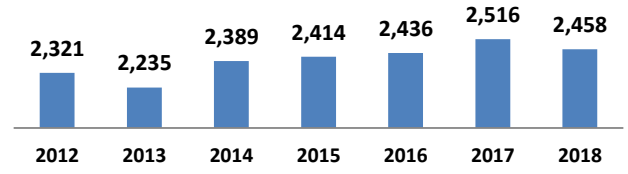
	2012	2013	2014	2015	2016	2017	2018
# yearly change		-41	57	88	75	28	-85
% yearly change		-2%	3%	4%	3%	1%	-3%

Prior Month: 01- 28 Feb



	2012	2013	2014	2015	2016	2017	2018
# yearly change		-15	20	166	10	64	-104
% yearly change		-1%	1%	7%	0%	3%	-4%

Fiscal Year to Date: 01 Oct - 19 Mar



	2012	2013	2014	2015	2016	2017	2018
# yearly change		-86	154	25	22	80	-58
% yearly change		-4%	7%	1%	1%	3%	-2%

Source: Travis County Sheriff Jail Population Report